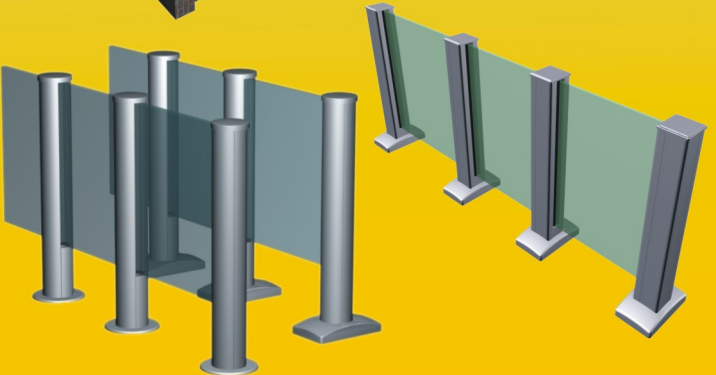
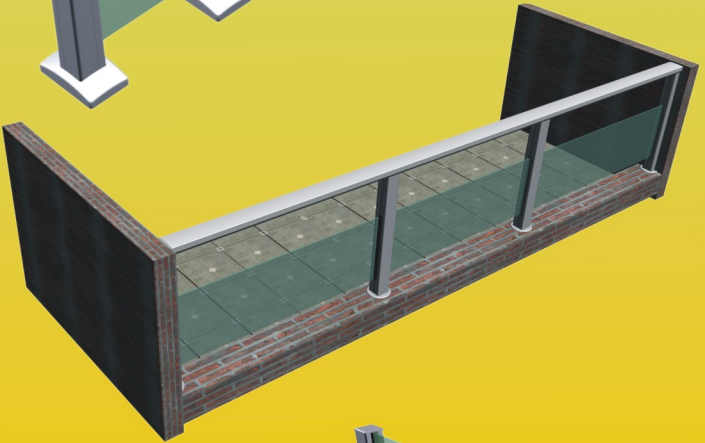
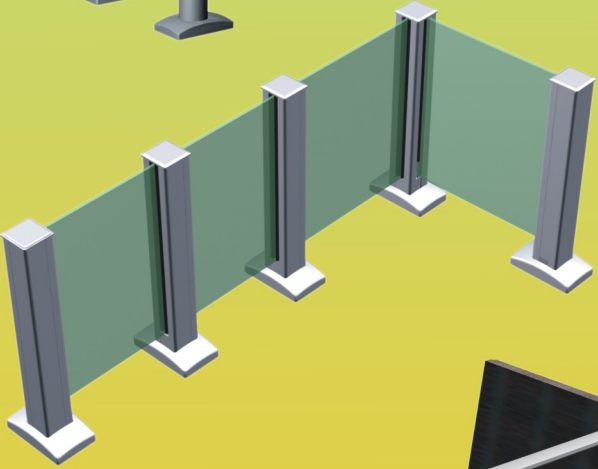
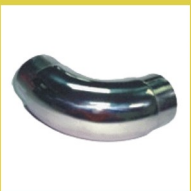


Aluminum Balustrade



Stainless steel

This is just a sample of the extensive range of standard stainless steel fittings. Our stainless steel range is very broad band and covers most of the building industry requirements. From simple balustrade to stairwell handrails, shop display, spider fitting for glass walls, and many other applications.



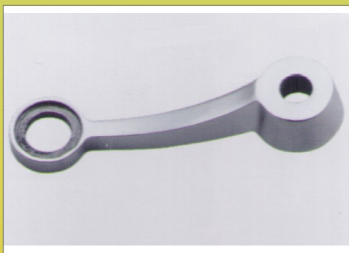
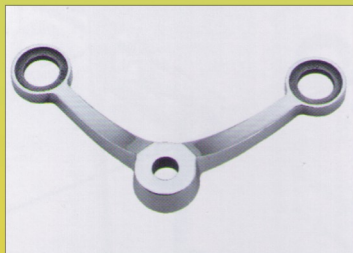
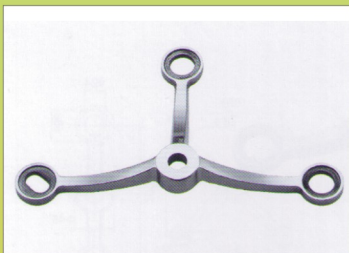
1. The stainless steel handrail range of fitting makes light work of any difficult job as the fittings are very adaptable to different configurations.



2. The stainless steel, D-clamp and glass support system although not unique just a far higher quality product than the cheap end of the market.



4. The spider system has been widely used in many different countries around the world as is simply one of the strongest made in the market. At a higher price the quality surpasses the value.



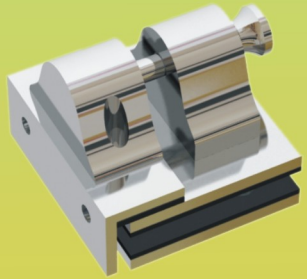
Gate door hinges and magnetic locks

We offer extensive ranges of bathroom fitting that are far higher quality than what is available on the current low end market. All these products are currently used in Germany and Japan.



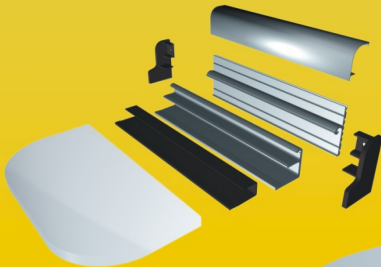
Shower door hinges/pool gate hardware

This system has been improved greatly from its original form, with higher weight fittings and stronger materials and all in stainless steel and not in plastic.

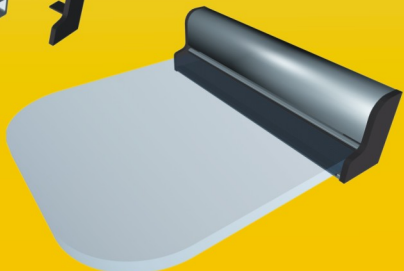


The adjustable shelf bracket system

Although there are many adjustable shelf bracket systems around the world not many can offer the flexibility and the simplicity of QUICK SHELF, available in either 600mm 750mm 900mm 1200mm 3600mm 5000mm, the combination are endless.



NEW



Double Glazed Window System

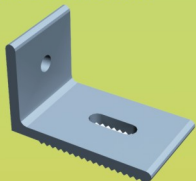
Enviro offers a very high quality double glazed window system that is a little different than most on the market. The sliding window, the awning window, the sliding door, and the hinge door. The unique attributes of this system is that the size of the glass can be up to 32mm thick so even a configuration of 12mm/12A/8mm can be achieved which give the window system a extremely high energy rating, to meet nearly all domestic building codes.



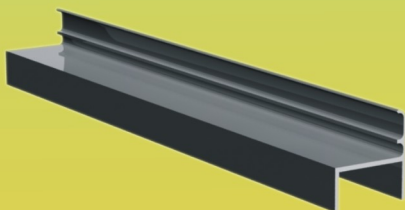
Enviro Custom Made Aluminum Components

Enviro manufacture many aluminum components for the window and building industry

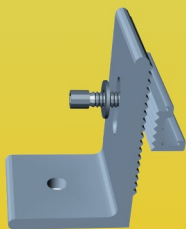
1. Aluminum Bracket



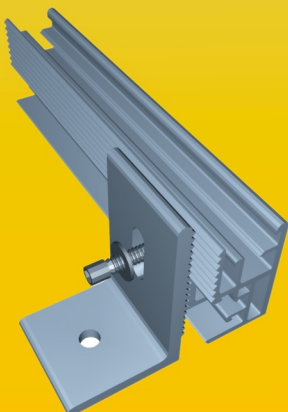
2. Solar Heater Rails



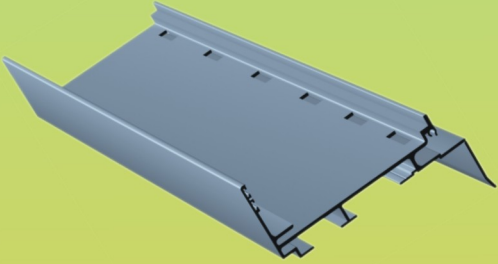
3. Curtain Wall Fixing Bracket



4. Solar Panel Support System



5. Machining Slotting of Sub-sill for 100mm and 150mm sections



The list is endless and the capabilities are huge with machines such as repetition saws and C.N.C machining capability, there are very few limitations.

Australian Design

Made in China



enviro
Aluminum Products & Sourcing Ltd
Multi Storey Hand railings, Pool Fencing, Partition Screens
ALUMINIUM GLASS WINDOWS & DOORS

CONTACT ENVIRO

marius@envirowd.com.au
coco@envirowd.com.au
connie@envirowd.com.au
www.envirowd.com.au



Aluminum Products & Sourcing Ltd

Multi Storey Hand railings, Pool Fencing, Partition Screens
ALUMINIUM GLASS WINDOWS & DOORS



Australian Design

CONTACT ENVIRO

maris@envirowd.com.au
coco@envirowd.com.au
connie@envirowd.com.au
www.envirowd.com.au

Company Introduction

Enviro Aluminium products and Sourcing Limited is a specialist company dealing with high quality Aluminium balustrade systems, stainless steel balustrade systems and architectural hardware fittings for the glass fencing, railing and balustrade industries. Our Head

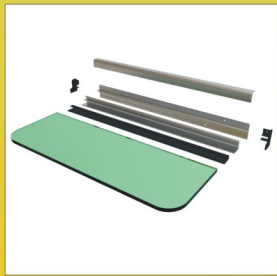


office is located in Qingyuan (Guangdong Province) south in China. Our unique strength is our Australian Management with over 28 years of product experience; we offer expertise that is not available from any other manufacture in China.



With our own and a number of joint venture manufacturing facilities we can offer a complete range of products which include aluminium extrusions, stainless steel castings and fittings, gate and door hardware and glass.

In fact we are the only real hardware design company in China who fully understand the applications and the requirements of each product we offer.



With many years experience in manufacturing in China we understand all the positive and negative issues that this great country offers and we can make doing business in China easier than doing business in your own country.

Have a look through our website and you will be pleasant surprised at the range and quality we have offer!



We offer a complete range of gate hardware.

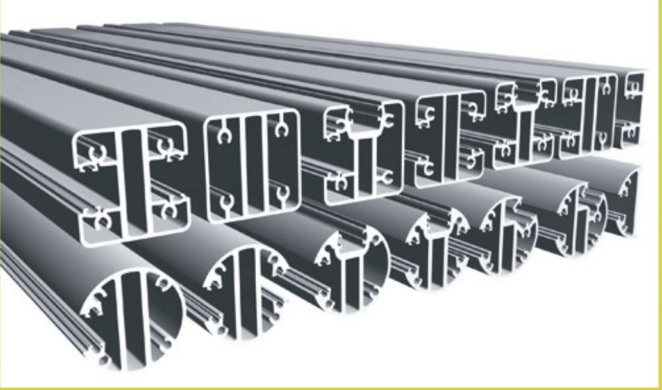


16 models of structural glass clamps (spigots) in 316 and duplex (2205) grades for pool and balustrade applications.

Aluminum

Aluminum Standard 54mm Posts

54mm series is available in round or square posts and has been developed for use in high quality pool fence and balustrade applications and has an exception range of features such as sliding in rubbers and the ability to be able to be strengthened with our unique stiffener system.



Aluminum Light Weight 54mm round posts

This range is more for light weight application such as balustrade that are on hobs and also non-impact application and applications where coast is the main criteria.



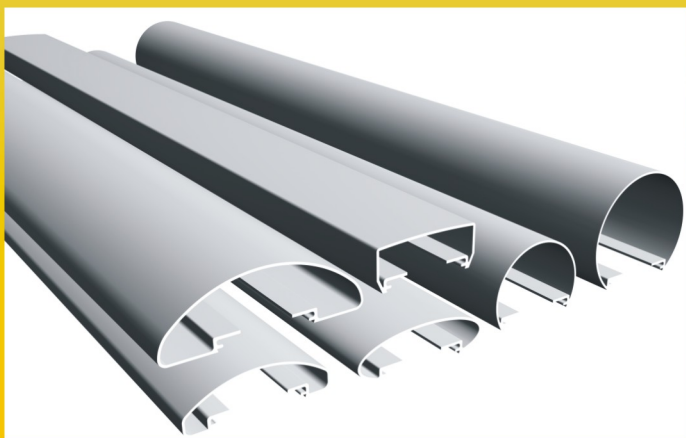
The Aluminum 70mm Series Balustrade System

This system although light weight is very strong and can be used in many different applications including pool fencing and balustrade, due to the 70mm width. An added feature is the thinness of the post.

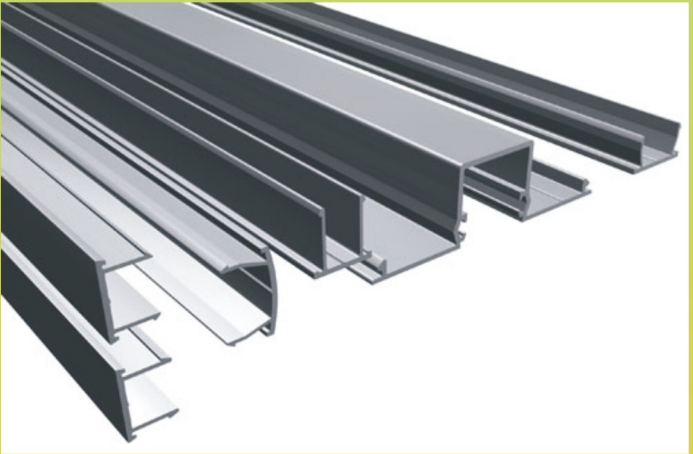


Aluminum Standard Range Handrail

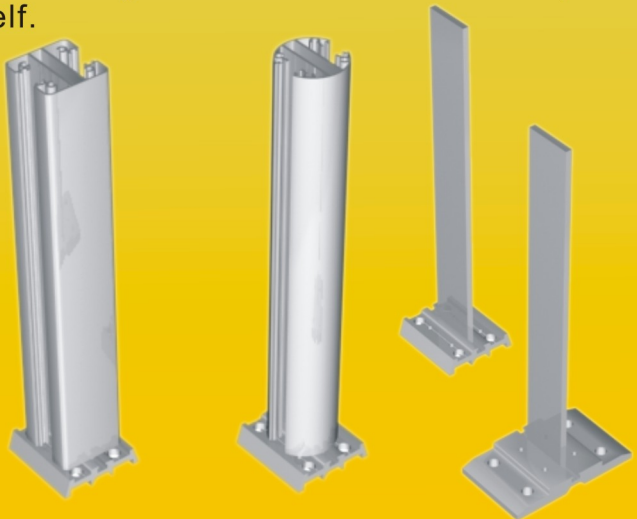
This range fits all of the posts that we have in the 54mm range both square and round, and can be interchange with any series posts. with some limitations. we can also design custom handrails to your requirements.



Different posts and handrail require different types of infill.

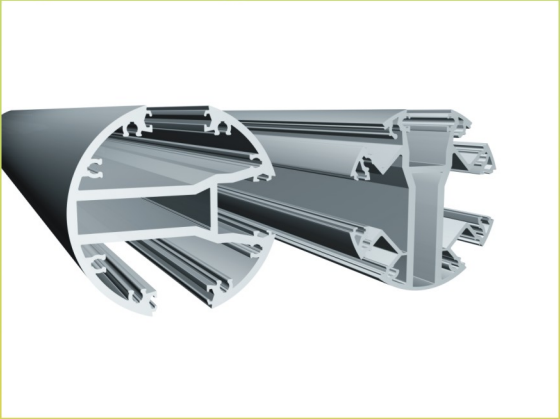


Aluminum post support brackets. These are used when core hole drilling is not practical or not suitable for the application. and due to engineering requirements required the post to be stronger when a base plate is used. if no extra strength can be screwed onto the post itself.



The Aluminum 90mm Series Partition System

This advantages of the system is that it can be used as high partitions fencing in most areas up to 2100mm and as smoke screen or wind screens, privacy barriers, boundary fencing and range of other applications.



Accessory for the aluminum balustrade system

They are used in the specified areas from top caps to bottom rings, rubber, end caps and aluminum handrail fixing brackets. All our products are designed for aesthesis and ease of installation.



L. E. D Lighting Handrails



This is a newly developed system that is used in hotels, bars and outdoor areas, using the balustrade or privacy fence as a means of lighting the area, using LED light in the handrails or in the posts.

