

Latest PRODUCT 1440DPI ECO-SOL LARGE FORMAT PRINTER
EPSON TECHNOLOGY, HIGH RESOLUTION, HIGH SPEED, LOW COST
PERFECT&ECONOMIC SOLUTION FOR CAR WRAPS,OUTDOOR
VINYLs,BANNERS,STICKERS.....

VINYL EXPRESS V ECO-SOL SOLVENT PRINTER



Features:

- * Epson DX5 solvent print head ,Max 1440dpi with double 4-color ink supply system .
- * Smart appearance, High manufacture craft for all components
- * High accuracy media feeding system and heavy duty media auto take up system.
- * Bulk ink supply system with 4x 440ml ink tank of CMYK
- * Imported HIWIN linear rail with double-slider ensures smooth ink carriage movement.
- * X and Y axis both take servo motors, more stable and lower noise during printing
- * With 3-section heating system with digital temperature adjustment.
- * Automatic flash-jet function to against print head jam, keep it wet while printing and standby.

* Metal carriage maintenance station with electromagnetic wiping and auto cleaning system.

* Print head height is adjustable by a knob on carriage easily from 1.8mm to 2.2mm for different thickness medias.

*The printing start point can be set freely, able to do borderless printing.

* Work with Maintop 5.3 RIP software with dongle, 3 anti-stripe printing modes and auto blank skip function.

Parameters:

Model	VE-18S1	VE-16S1
Max Print Width	1800mm 1600mm	
Print head	Epson DX5 Solvent	
Number of Print head	One	
Max Resolution	1440dpi	
Color Mode	Dual CMYK	
	3 Pass(Draft mode)	27.42 m ² /h
Speed	4 Pass(Produce mode)	18.24 m ² /h
	6 Pass(Quality mode)	13.2 m ² /h
	8 Pass(High resolution)	9.12 m ² /h
Ink Type	Eco solvent ink/water based ink/sublimation ink	
Media adsorption system	With	
Drying Fan system	With, 2 sections adjustable	
Media take up System	With	
Interface	Ethernet *Optional USB	
Language	English	
Software	Maintop 5.3 with dongle	
Printer driver	Windows 2000, XP, Win7	
Print head Cleaning	Automatic	
Heating system	Embedded intelligent 3-section heating	
Print head height	1.8mm-2.2mm	
Power	AC220v, 50HZ/60HZ	
Print Material	Vinyl, flex banner, PVC, One Way Vision, canvas, etc	
Image format	Bitmap, Tiff, Jpeg, Eps, Pdf, Cad	
Media process	Roll to Roll	
Machine/Packing size /180s	2667x775x1207mm/2770x700x600mm	
Warranty	12 months Parts Warranty	

Details:



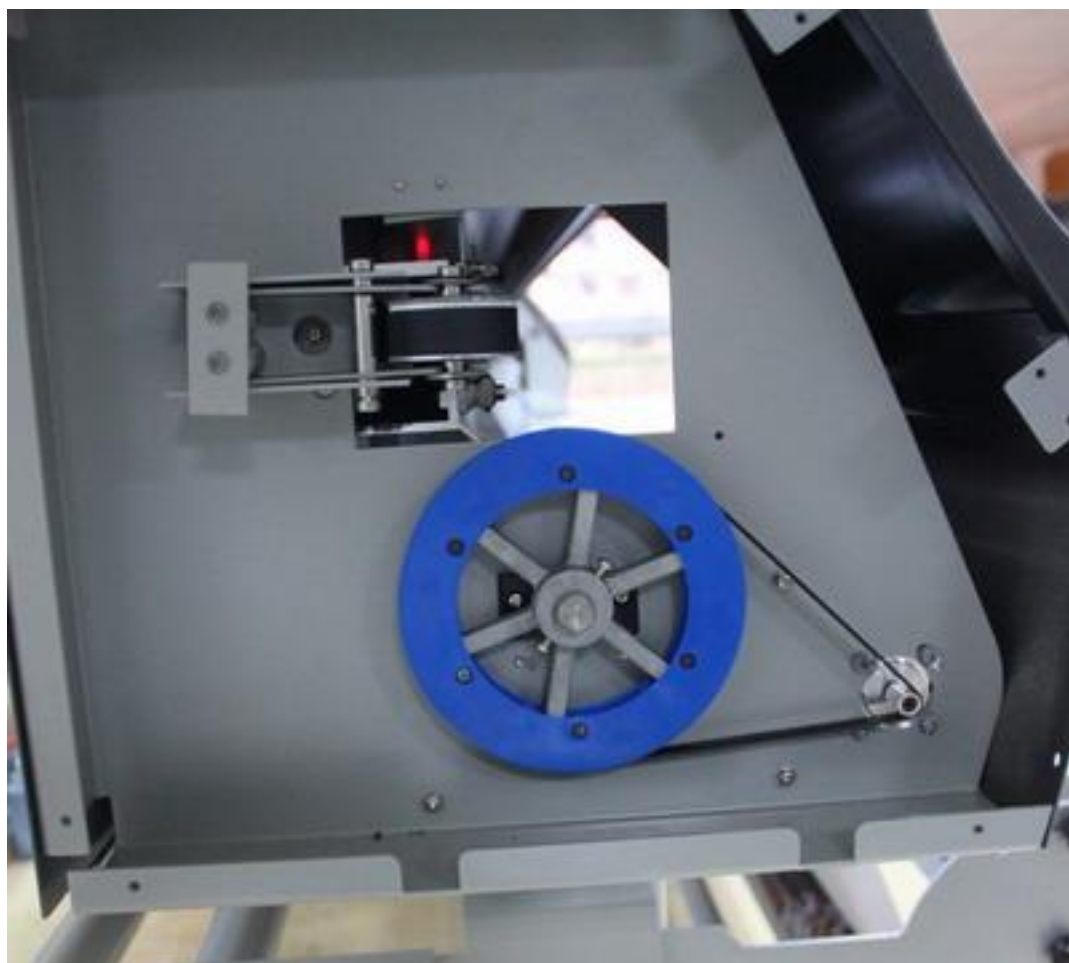
High quality and refined carriage with double sliders on linear rail



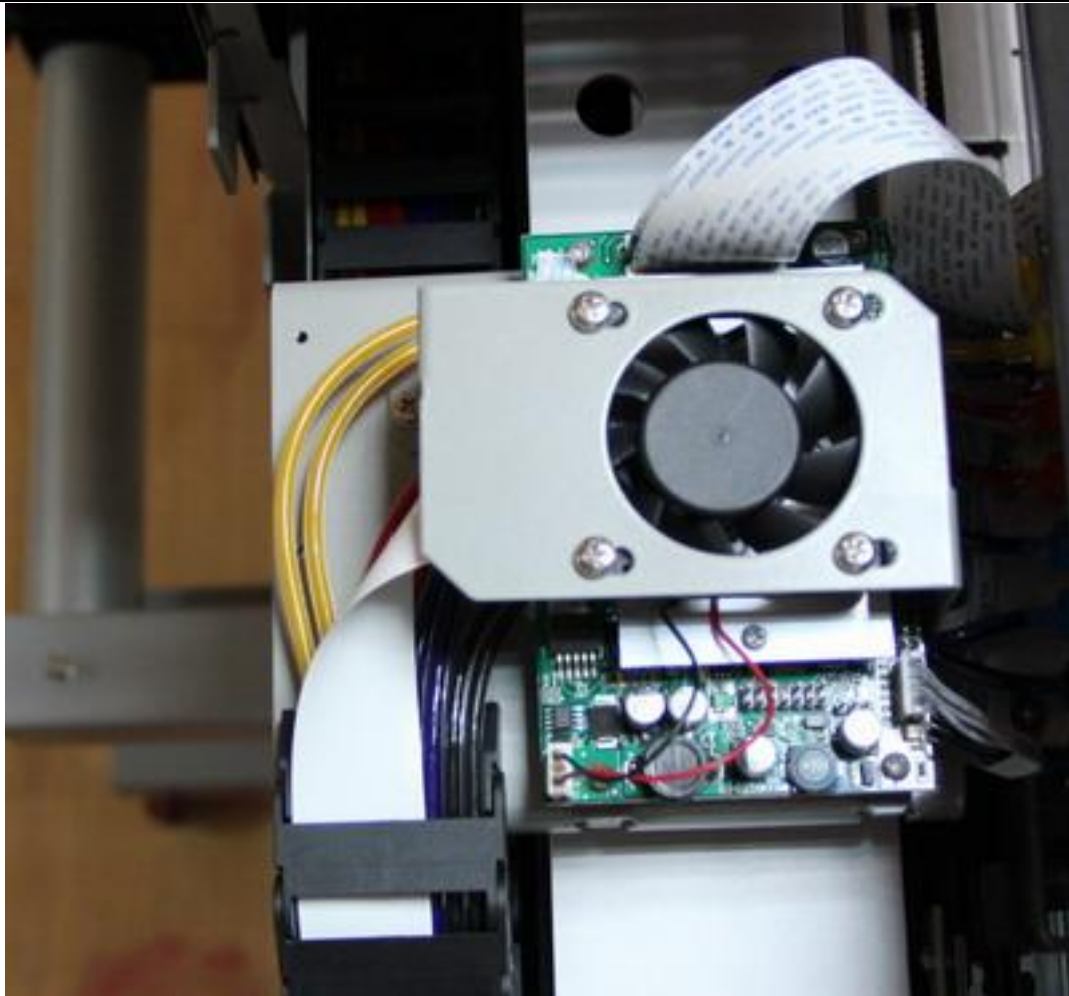
4x440ml smart ink tank



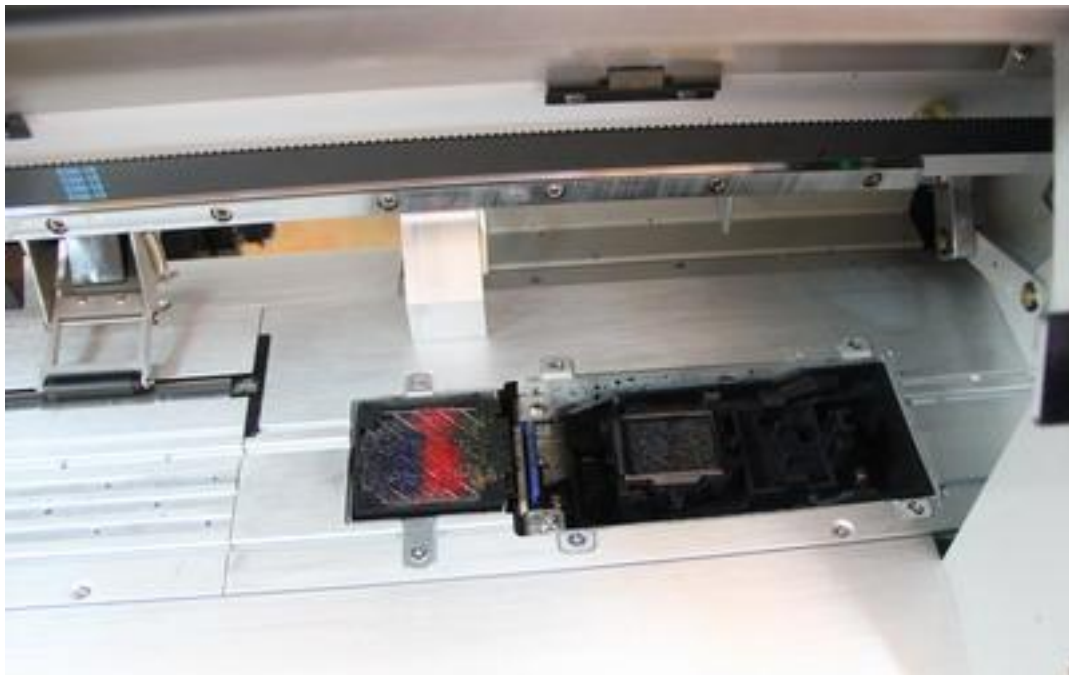
Digital Adjustable heating temperature for different medias



High precision transmission system with servo motors



Print head board with cooling fan



Print head Maintenance Station



High Accuracy friction roller system



Automatic Media take up system



Drying Fan system-2 Section control

Price:

18S1,5590\$;16S1:5390\$,FOB, Including stand, 4L eco-sol ink, 1L cleaning solution, Maintop RIP software with dongle, manual, fan drying system, take up system, data cable, power cords,12 dampers(4 spare),2 cap tops(one spare),8 spare short ink pipes. print head data cables ,etc all comes ready to work.

Spare ink price: Compatible Eco-sol ink,28\$/L/color; cleaning solution: 22\$/liter

Common consumables: Ink,Damper,Cap Top,Wiper,print head data cable

Shipping & Payment: we usually ship this machine by sea, port to port. Please tell me the arrival seaport near you before the order.

We prefer the payment by T/T

Shipping time: 5-7 working days after receiving payment.

Warranty: One year parts warranty and unlimited online support (MSN, Skype, email: support@signstech.com). Local service at customer' s cost.



SIGNSTECH INERNATIONAL LTD

1006 YINYAN BDG 25TH YANLING ROAD GUANGZHOU 510507 CHINA

WEBSITE: WWW.SIGNSTECH.COM

EMAIL: SALES@SIGNSTECH.COM

Why Choose Our Printer?

We compared our printer with some other competitors with cheap prices by field survey; now please check out the results:

Item	Printer	Vinyl Express V	Others
Structure		Heavy Duty structure, very strong media feeding and take up system	lightweight structure, fragile and rough
Body Material		Complete metallic and thick components	Plastic on front face and other parts, thin components
Linear Rail		Taiwan HIWIN	Domestic or Round rail
Motors		X and Y axis both servo	Both stepper or stepper servo
Carriage Station		Big and comfortable, easy and convenient maintenance	Small, very cramped, hard to maintenance
Cleaning &wiping		4 modes cleaning and active electromagnetic wiping	Just one mode and passive wiping
Ink pump		Big and powerful	Small and weak
Heating System		3-section digital adjustable	1-section with fixed temperature
Air drying system		2-section change	1-section only
Print head height		Adjusted just with a knob on carriage, easy	Adjusted by different screws on carriage, complex
Circuit boards		Precise and refined with air cooled	Domestic, rough without cooling
Carriage running speed		Options from 1-9 class	Just 2 or 3 options class
Flash-jet function		Yes	No
Friction roller		Hard rubber	Plastic
Borderless Printing		Yes	NO
Software anti-stripe		3 modes	One or none

