



HAIAN WEIGUO MACHINERY CO.,LD/DUNCHENG IMPORT AND EXPORT

Add:2315room,Zhifu building,No.299,Tongdu north road,Jiangyin city ,Js,CN

Mail:sales@dchpack.com ,sales@tannerymachine.net Mob:+86-13404287756 Fax:+86-510-86023252

LEATHER PROCESS TANNERY MACHINE COMPLETE LINE

FROM RAW SKIN TO FINISHED LEATHER

from Ms.Belinna 2013



MACHINERY LIST

No	Machinery name	Work size	Function
1	Drum	Buyer request	Wooden, stainless steel , PP material
2	Fleshing machine	Max 3200mm	Remove the dusty of leather surface
3	Splitting machine	max 3200mm	Split leather
4	Through feed sammying machine	max 3200mm	Remove water, stretch the leather
5	High precision splitting machine	max 3200mm	Wetblue leather split
6	shaving machine	Max 3000mm	shaving
7	Sammying and setting out machine	Max3200mm	Remove water and setting out
8	Vacuum dryer	2P to 6P	Forming and dry
9	Overhead hooking hangers conveyor	Leather request	Air dry
10	Toggling machine	20 to 160 frames	Stretch and dry
11	Vibration staking machine	Leather quest	Leather soft
12	Buffing machine	600 to 3200mm	buffing
13	Air dusty machine	Leather request	Remove the leather dusty
14	Spraying machine	Less 3400mm	Spraying color
15	Roller coating machine	Less 3400mm	Leather looks with oil and smoothing
16	Embossing machine	More size	Embossing or cover some faulty
17	Ironing machine	Leather request	Stretch and shining (full size)
18	Polishing machine	Leather size	Leather surface shining (part)
19	Leather measuring machine	Less 3400	Count and measuring stamp



A.DRUM(wooden drum/round or octagonal stainless steel drum/PP dyeing drum)

1.woodendrum(4.2x4.5m,4x4m,3.3x3m,4.5x4.5m,4.5x4.2m,4x3.5,3.5x3.5,3x3m,2.5x2.5m,2.5x2m,2x2m, buyer request)



1	Material	Imported wooden	EKKI
2	Thickness of wooden	60/70/80/90mm	
3	Drum structure	Complete frame and drum fix	With safety project device
4	Running drive	Gear box	pulley
5	door	Stainless steel	Possible move
6	Revolution speed	3-6/min	18/min
7	Drum support	Fix on any place	Cement
8	Gear box	cycloidal reducer	
9	Drain off water design	One head dewater	2pcs water valve



2. Stainless steel octagonal milling drum



Running speed	5-20 rpm stepless speed regulation
Motor power	15kw
Weight	5500kg

Drum body	Stainless steel	304
Gear box	R97DM160L4/BM	SEW
Motor	15kw	SEW
Inverter	A540	TAIWAN
PLC	60 point	MITSUBISHI
Temp control	AI-708B	FINLAND
Temp control	AI-708	FINLAND
Temp sensor	PT-100	FINLAND
Air cylinder		TAIWAN
Rotary joint		JAPAN
Bearing		JAPAN NSK

3.ROUND AND PP DYEING DRUM





B.HYDRAULIC FLESHING MACHINE(1500/1800mm)

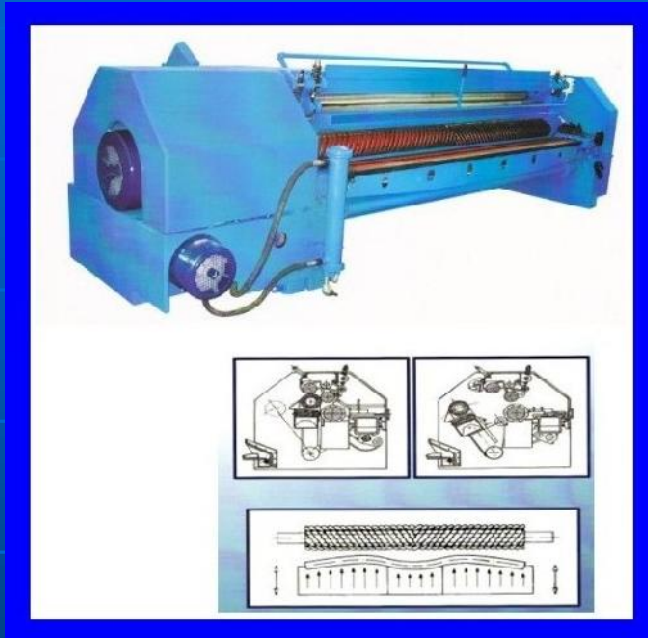


1. Professional for small size goat ,sheep or similar leather
2. Hydraulic control
3. Automatic grind the blade unit
4. Key electric part and hydraulic part from famous brand

Work size	1500mm	1800mm
Feed speed	25-32m/min	25-32m/min
Power	11.25kw	16.75kw
Weight	3000kg	3600kg
Overall dimension	3050x1050x1850mm	3400x1050x1850mm



C.HYDRAULIC FLESHING MACHINE



1. Alloy steel and great diameter bladed cylinder, and import bearings, guarantee the running precision

2. Hydraulically controlled transport device consists of a diamond pattern roller and a great diameter roller; it's speed can be adjusted from 19 to 50 m /min.

3. Hydraulically supported rubber bolster
Automatically check the thickness of hides; make whole hide good fleshing effect. The fleshing thickness can be automatically check the thickness of hides; make whole hide good fleshing effect. The fleshing thickness can be automatically adjusted within 10 mm .

4. Automatic opening rollers let hide come out of the machine without for the head to asperity's easy to operate and promote the productivity.

5. In work area, double safety device includes a sensitive barrier and the closure control operated by two linkage pedals. Electrical equipment fit the international safety regulations

Work size	2700mm	3200mm
Motor power	45kw	55kw
Oil pump motor	11kw	15kw
Machine weight	7850kg	9000ks
Machine size	4900x1450x1600	5400x1450x1600



D. SAMMYING AND SETTING OUT MACHINE



1. Wet blue small size goat ,sheep or others leather

2. Sammying and setting out together

3. Auto grind blade

4. Hydraulic

5. Work size :1500mm

6. Feed speed:3-23 m/min

7. Power :11kw

8. Weight :3000kg

9. Overall dimension :3400x1300x1625mm





E.THROUGH FEED SAMMYING MACHINE

Working size (mm)	2400	3200
Working speed	6-15m/min	6-15m/min
Total power	20.5kw	25.5kw
Hydraulic pressure	20-100kgf	20-100kgf
Machine size (mm)	2400x4200x1900	2400x5000x1900
Machine weight (kg)	11000	13000





F.BLADE ROLLER TYPE ROTARY STAKING MACHINE(1500mm)



- 1.The machine is designed to stake and set out dried leather for fine grain and smooth finish. It is a key machine to improve the quality of soft leather.
- 2.Compact and versatile, the Machine is particularly suitable for the processing of goat and sheep skins, double face as well as of light hides. Rugged construction (exclusive heavy duty full piece frame), reduced maintenance, easy adjustment and high working speed make the difference between this modern machine and all traditional rotary staking machines. The combined action of two blade rollers and of two special design feed rollers (exclusive double layer rubber and wear resistant leather coat) allow the best staking, the complete spud ding and the perfect spreading of all types of leather. Thanks to the special design of the blades edge and to the separate control for the adjustment of the speed of the two feed rollers, the machine can get matchless performance on the large, heavy and rigid leathers as well as on the most delicate, soft and small size leathers, with the best surface yield and the minimum loss due to staking wastes even on double-face leathers.
- 3.The machine is equipped with two blade rollers. The first roller with wave shaped blades is designed to carry out the heavy staking and the spud ding action whereas the second roller, provided by straight profile blades, has the goal of completing the staking action and of spreading and setting out the leather surface

4.The special hydraulic system with variable delivery hydraulic pump prevents any overheating of the oil and allows reduced power consumption and high opening and closing speed. The Machine is actually the fastest rotary staking machine available.

5.The setting up of the special leather coat of the two feed rollers has definitely solved the adjustment problems related to the traditional leather sleeves (fitted on two rollers) and has allowed a more rational design of the work area getting an easier feeding of the leather into the machine with a consequent increase of the performances



G.SPLITTING MACHINE

Work size	1200-3200mm	
Mini split thickness	0.5mm	Tanned leather
Split precision	+/-0.08mm	
Mini split thickness	0.3mm	Finished leather
Split precision	+/-0.06mm	
Key electric part	Imported	
System control	PLC	
Advantage	Auto count, remmber, test ,digital display	
Drive type	hydraulic	





H.SHAVING MACHINE (450mm/1080mm)



- 1.Small size shaving machine
- 2.After shaving the leather mini thickness 0.4/0.6mm
- 3.Auto grind the blade
- 4.Work width:450/1080mm
- 5.Blade running speed:1850r/min
- 6.Blade no:10 pcs/each side
- 7.Feed speed:7.4-11.7/8-30m/min
- 8.Total power:8.6/22.62kw
- 9.weight:2200/4100kg
- 10.Overall dimension:2100x1276x1454mm
2250x1950x1600mm



I.SHAVING MACHINE



Work size	1500-3000mm	
Leather	Wet blue	
Feed speed	0-25 m/min	
Capacity	40-100pc/h	Leather size
evenness	+/-15%	

This machine is mainly used for shaving process of all kind of Wetblue leather, especially for whole piece blue wet leather of cattle, After shaving, it enables thickness of leather to reach the regulated thickness and eliminate defects which the thickness is not conform to the requirement and thickness of various parts is different. Through shaving, distribution of thickness of leather is uniform and the back side of leather is clean and flat.

This machine adopt the form of hydraulic transmission combined with machinery transmission. The blade roller is driven by motor directly, the blade roller system has been balance and rectified, so running is stable, feeding roller adopt hydraulic stepless speed regulation(1-25m/min adjustable) The reciprocating motion of grinding blade mechanism is completed by reducer with motor. There are three kinds of grinding form may be chosen, The adjustment of shaving thickness is completed by turning hand wheel of feeding roller or by control stepping hydraulic cylinder for fast increase thickness.



J.STAKING AND SETTING OUT MACHINE(1500)

- 1.For dry leather
- 2.Staking and setting out without blade
- 3.For goat and sheep leather
- 4.Work size :1500mm
- 5.Feed speed :2-17m/min
- 6.Weight :3500kg
- 7.Overall dimension :
3450x1180x1625mm





K.VACUUM DRYER(2P-6P)



Key part	International brand
Vacuum system	High vacuum degree Short time for vacuum Oil ring vacuum pump and roots vacuum booster
Pollution discharge system	Remove the sewage shortly Delay the machine life
Control system	Work temp :30-95 degree Vacuum time :0.5-30min Vacuum degree:10-1000mbr Dewater percent:30-80% Steam pressure:0.4-0.5 Hydraulic pressure:9mpa Compressor air pressure:0.5-0.6 PLC control
Safety system	Hydraulic lock and balance valve Airy cylinder drive safety block Emergency stop button
Condensation system	Double stages condenser Improve the suction capacity Heighten vacuum degree
Hydraulic system	Imported foreigner brand Special lifting oil cylinder



L.OVERHEAD HOOKING HANGERS CONVEYOR

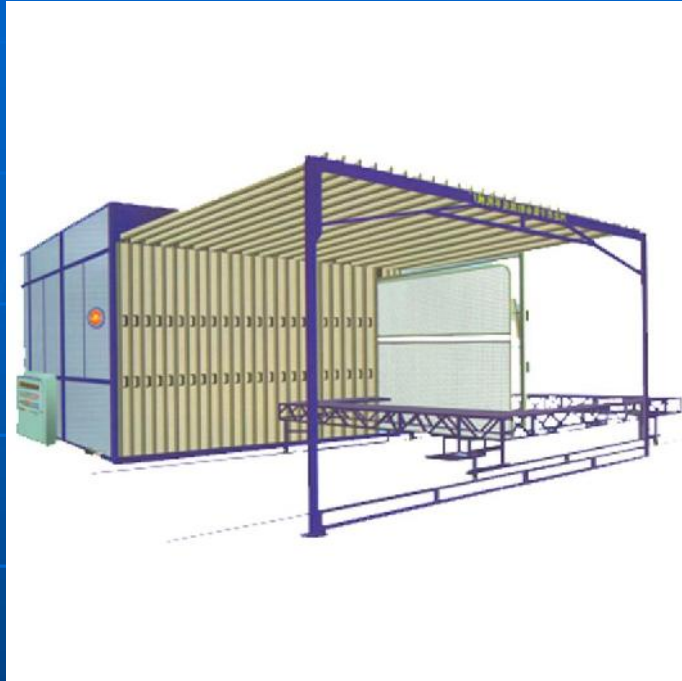


Hooking hanger	Any size	length
Dry tunnel	Any size	Width
Drive system	Motor	Inverter ,gear box
Clip	Steel and Nylon	
Hangers type	U OR H type	
Function	Air dry	Naturally dry
Conveyor steel	Anti-rust	





M.BOX MANUAL TOGGLING MACHINE



- 1.For any animal leather
- 2.Steam as energy possible from electric ,gas or others
- 3.Toggling plate size :length from 1300mm to 3500mm
width from 1600mm to 3500mm
- 4.Toggling number: from 10 frames to 50 frames
- 5.Air cylinder ,clip or operate table for choose



N.ROTARY TOGGLING MACHINE



- 1.For big size big capacity leather dry
- 2.Tempetature ,windy, humidity control automatically
- 3.Toggling plate :25-160 frames
- 4.Toggling plate size :mini:2600 -3000mm width
mini:3000-4000mm length
- 5.PLC control ,operate easy
- 6.Copy Italy ,same function ,lower cost





O.AUTO TOGGLING MACHINE



Model size	1200mm,1400mm,1600mm,1800mm,2000m m,2200mm	
Stretch range	0-120mm	PLC control
Speed	16.5m/min	Oven temp:20-70 degree
Toggling screen	Casting ZINC, thickness more than 8 micro	
Dry system	Steam from gas ,electric or others	





P.VIBRATION STAKING MACHINE



Work size	1600mm	2400mm	3200mm
Staking head	2 /3/4head		
frequency	600t/m		
Working speed	0-20m/min		
Bearing	NSK		
Drive motor	WJ70-30-Y1.5		
Oil pump pressure	3.5-4.5mpa	4.5-5.5mpa	4.5-5.5mpa
Hydraulic parts	TAIWAN		
Air cylinder	TAIWAN		
Vibration damper airbag	International brand		
Staking cloth	International brand		



Q.BUFFING MACHINE AND AIR DUSTY COLLECTOR



Work size	300 to 3200mm	
Bearing	NSK	
Motor	Inverter control	
Electric part	Best quality	
Air dusty part	including	
Operate	By air	
Hair brush	Two sets	
link with	Air dusty machine	
Link with	Leather Powder collect machine	



R.SPRAYING MACHINE

1. Size :1000,1200,1400,1600,1800,2200,2400, 2600,2800,3000,3200,3400mm
- 2.Spraying guns: from Italy or Germany A11
- 3.Electromagnetic valve: Germany
- 4.Pump : Italy
- 5.Computer :one year can save one machinery cost paint
- 6.Dedusty
- 7.Spraying room
- 8.Ovens : 10 meter for 5sets oven
- 9.Heating :steam, oil or electricity
- 9.transporter:front lines and after lines are separated
- 10.Washing line :high-class washing line group

**FOR THE DUST ,OVEN ,WASHING UNIT AND OTHERS
DETAIL PLEASE LET US KNOW ,WE'LL SEND
SOON**





S.EMBOSSING MACHINE

- FLAT EMBOSSING MACHINE



- THROUGH FEED IRONING AND EMBOSSING MACHINE





T.ROLLER COATING MACHINE



Work size	1000-2400MM
Material coating	Oil or was
Work type	Through feed
Motor inverter	International brand
Follower roller bearing	Switzerland
Doctor Blade	Italy
Diaphragm	Italy
Electric part	Japan
Rubber roller	Including
Rubber conveyor	including
Oil heat device	including
Detaching Device	Including



U.POLISHING MACHINE



The polishing rollers are imported from Italy, white having abrasion-resistant hard rubber and chromium-plated hard steel rollers available for selection as feeding roller.

The feeling section has frequency-controlled stepless speed regulation, giving a stable and high production driving.

Equipped with safety devices, to ensure personal safety.

The machine when its polishing roller is replaced by leather-grinding roller, can be used

The machine can be supplied with different types of polishing rollers suitable for different products: Naxos roller (combined with felt coated feed roller) for "crust" and to get finer and smoother grain, wool disks roller for "nappa", felt sleeve roller for printed leather, cotton disks roller for "brush off" etc.

The aspirator is included in the machine that can be directly connected with the dust filtration system.

Work size	600mm	1500/1800mm
Speed	17m/s	
Motor power	8.97kw	
Feed speed	0.18-0.6m/s	
Bearing	NSK	
Air cylinder	TAIWAN	
Polishing roller	Italy	Germany
Machine Including Polishing Kit & Dust Collector		
Roller motor	11kw	
Fan motor	1.1kw	
Hair brush	High temp	



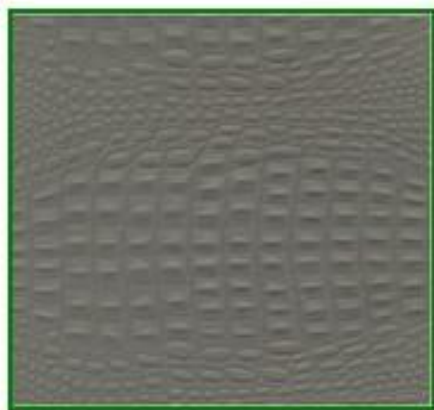
V.LEATHER MEASURING MACHINE



WORK SPEED	9-29M/MIN	Spare parts	
Measuring precision	The same verifying standard board under continuous accumulate-adding 10 times condition $\pm \leq 1\%$	Printer	1 set
Computer	Advanced type	Monitor	1 set
Printer	High speed	Infrared sensing	9 pcs
Optical scanning mode	Digital infrared ray	Power card	1 set
Synchronous track	High precise sensor	Camera card	1 set
Showing mode	English	Print paper	20 rolls
Stamp	Numerical-control	Keyboard cover	2pcs
Set and editing	delete	Print ribbon	5pcs
Size function	Measuring and count	Master board	1 pc

Remark: our supply finished leather machine,wetbule machine ,shoes factory machine ,sofa leather, hard leather rare leather measuring machine for difference model type .

Embossing mould (animal)



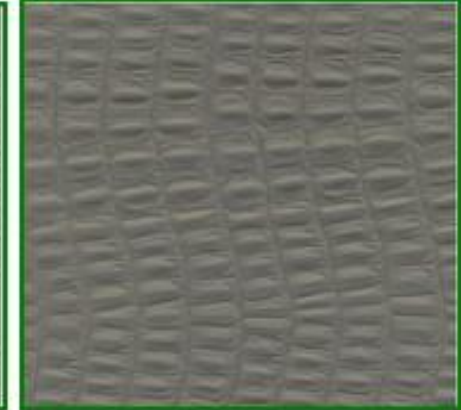
A001



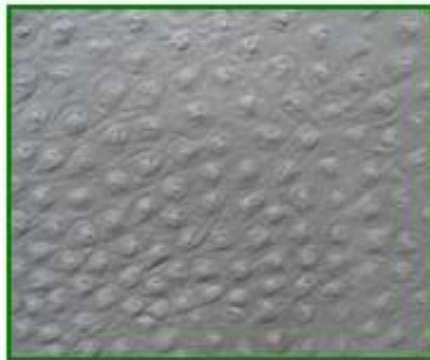
A002



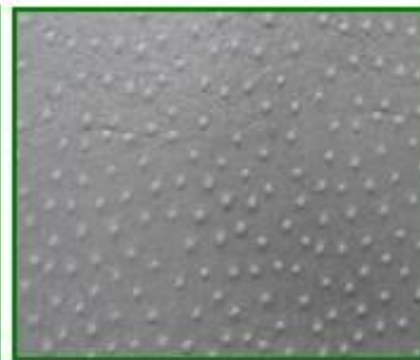
A003



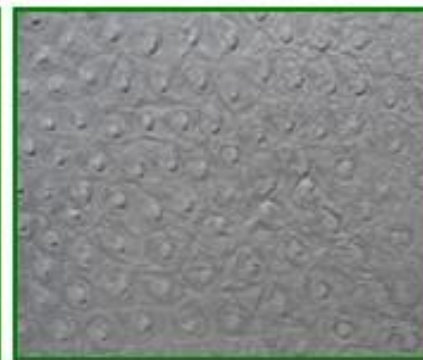
A004



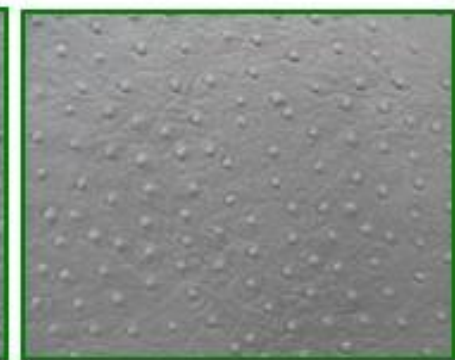
B001



B002



B003



B004



C001



C002

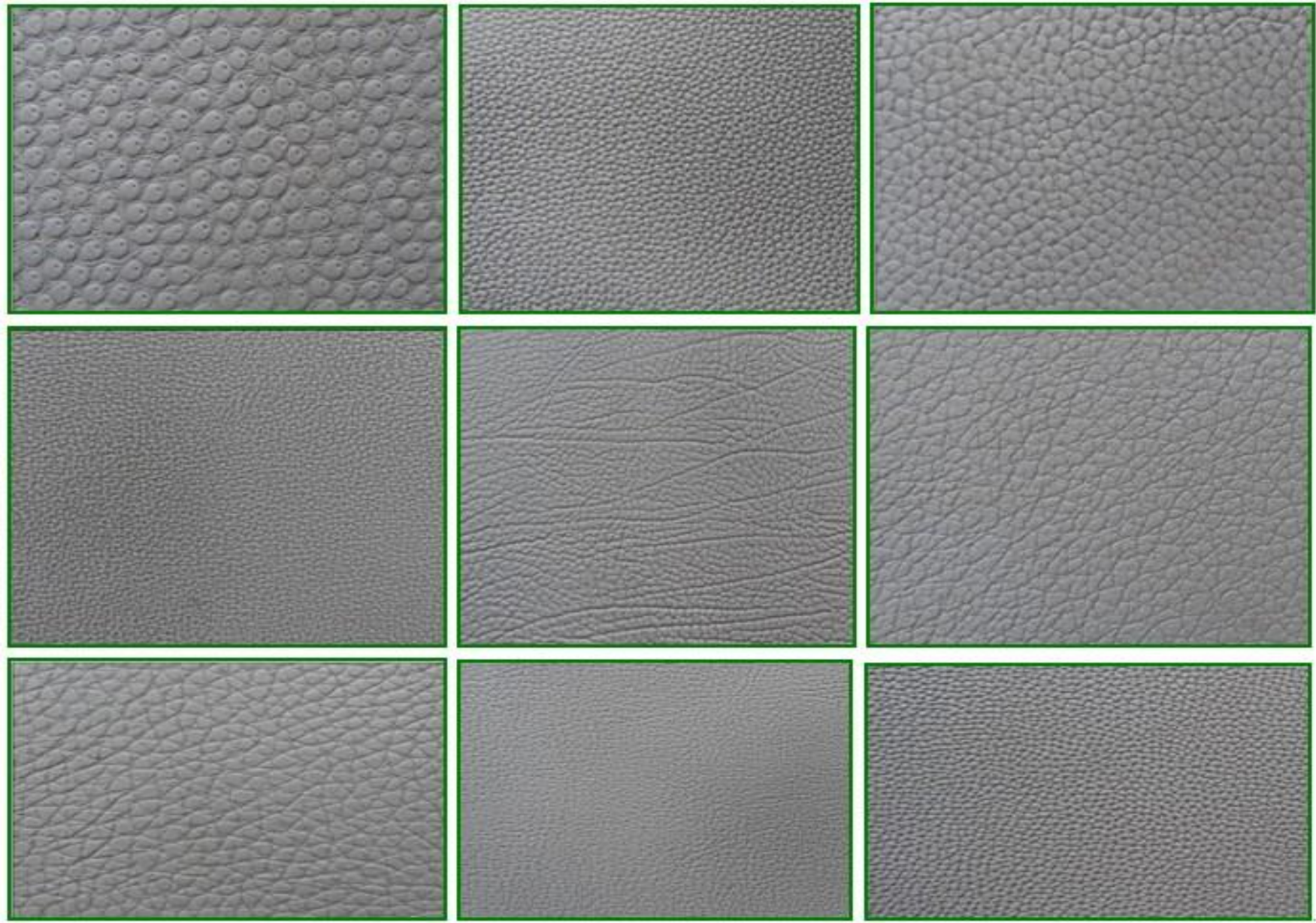


C003

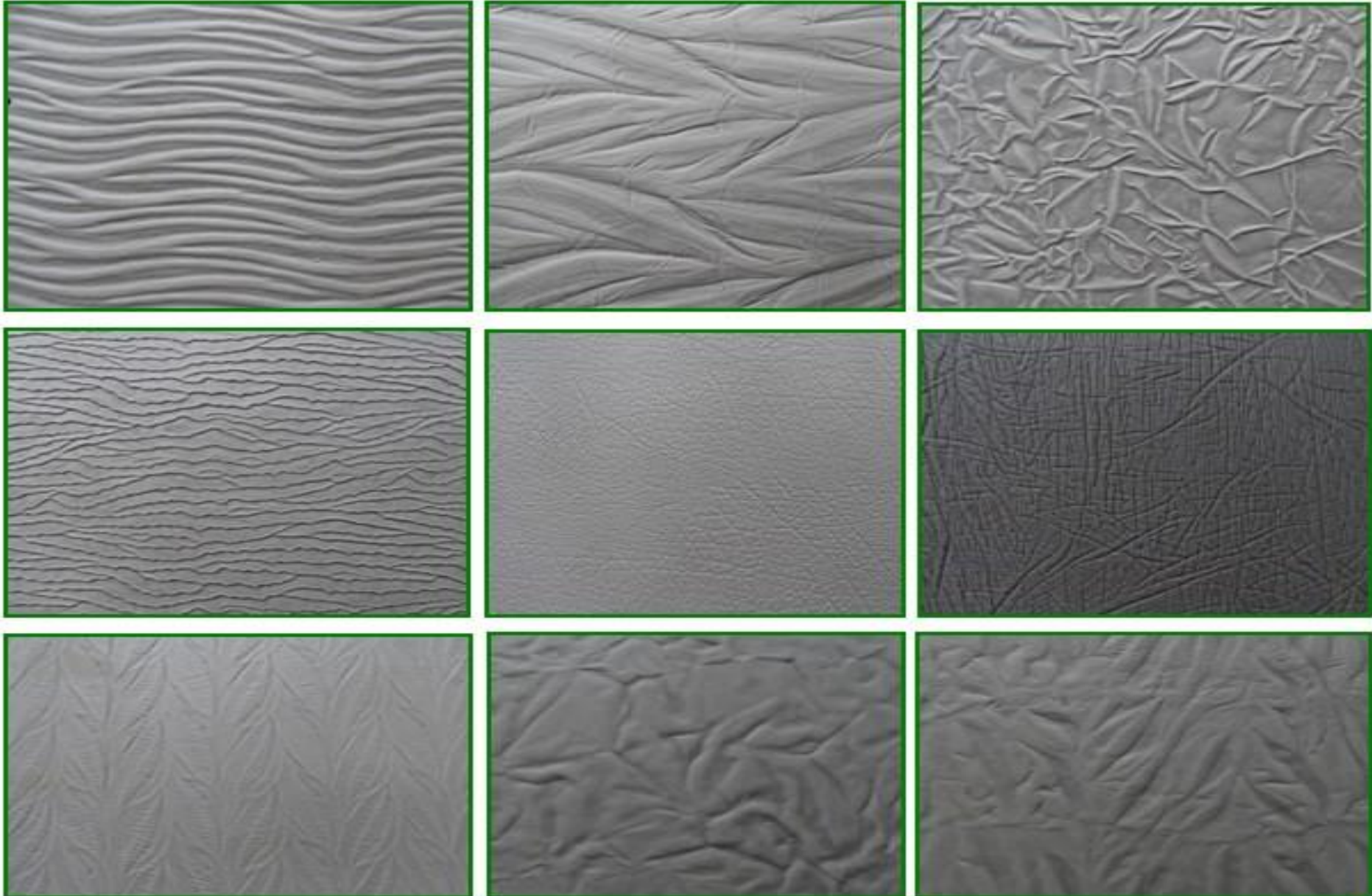


C004

Embossing mould (Litch)



Embossing mould (tree)





Thank you!

Remark: thanks view our brochure, more detail,video request please let us know ,we'll supply to you soon.

HAIAN WEIGUO MACHINERY CO.,LTD /DUNCHENG IMPORT AND EXPORT CO.,LTD
(OFFICE:ROOM 2315,Zhifubuilding,no.299Tongdu north road,Jiangyin,Jiangsu,CN,214400)

Mail:sales@dchpack.com, sales@tannerymachine.net

skype:belinna_2004 mobile+8613404287756

Tel/fax:+86-510-86023252,http://www.tannerymachine.net